

# Jarette's Farm Journal

Jarette Hurry

August 2019

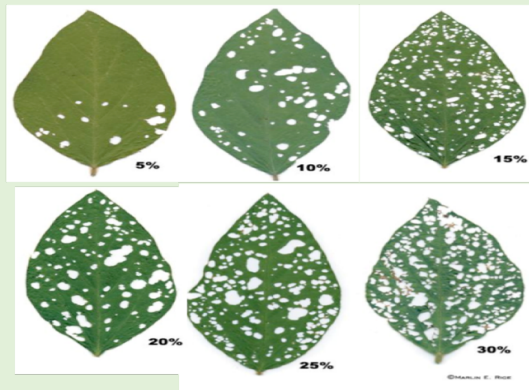


For more information regarding any of your farming needs, please feel free to contact the Bertie County Cooperative Extension Office at (252) 794-5317. Your questions and comments are important to us.

## Insecticide Recommendations for Earworm/Bollworm in Soybeans

Dr. Dominic Reisig NC State Entomologist is encouraging soybean growers to **avoid** using the insecticide (Chlorantraniliprole) **Prevathon** and **Besiege** in soybeans to preserve it in cotton. We are recommending soybean growers use **Blackhawk**, **Intrepid edge**, or **steward** to control corn earworms in soybeans.

- When treating prior to bloom the defoliation threshold is 30 % throughout the canopy until bloom and 15% defoliation after bloom.



- Growers should use the online corn earworm threshold use the link below:
- <https://www.ces.ncsu.edu/wp-content/uploads/2017/08/CEW-calculator-v0.006.html>

Sampling Method	Sweep Net (7 - 21 inch rows)		
Control Costs (\$) (Product + Application)	7.50		
Price of Soybean (\$)	9.00	per bushel	
Row Width	7 inches		
EIL:	Update	1.25	caterpillars per 15-sweep sample

OR



ncsu corn earworm calculator

# Bollworm in Cotton

Dr. Dominic Reisig NC State Entomologist is alerting cotton growers to plan and be prepared to spray Bt cotton if they want to preserve yield. **Bollgard II, TwinLink, and WideStrike are most at risk.** Bollgard 3, TwinLink Plus, and WideStrike 3 varieties will only need to be sprayed under the most extreme pressure situations.

## Preventative strategy for Bollgard II, TwinLink, Widestrike (note this is the NC State Extension recommendation for these varieties):

If there are 25 eggs on 100 terminals or leaves (search multiple plants), and if stink bugs or plant bugs are not an issue, apply **Prevathon**. If stink bugs or plant bugs are an issue, apply **Besiege** (note that this will kill more beneficials compared to Prevathon). Do not use this strategy if eggs have hatched and 2<sup>nd</sup> instar larvae are present. If 2<sup>nd</sup> instar larvae are present use the reactive strategy threshold discussed below. Expect **NO** return or to lose money if you use the preventative strategy for **Bollgard 3, TwinLink Plus, and WideStrike 3** (which are pretty effective for bollworm thanks to the Vip protein).

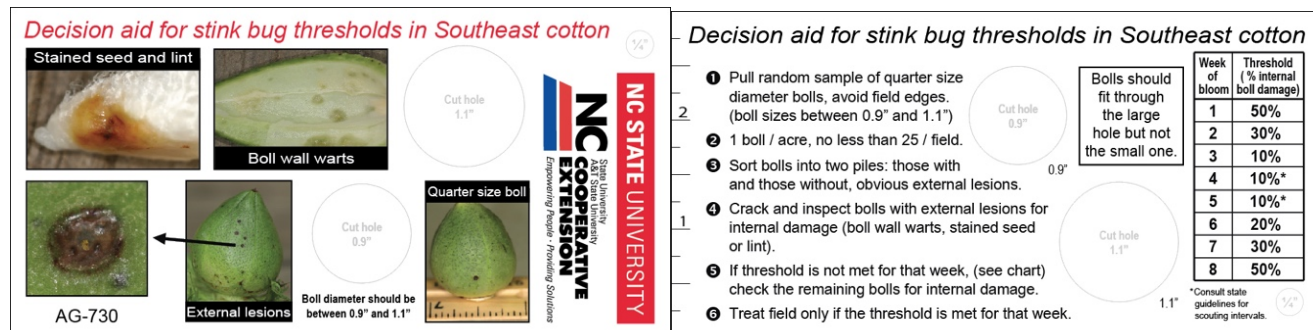
## Reactive strategy for Bollgard 3, TwinLink Plus and Widestrike 3 (note this is the NC State Extension recommendation for these varieties):

To use the reactive strategy, only apply an insecticide when thresholds are reached (three 2nd stage bollworm (or larger) in 100 squares, blooms or bolls on one scouting trip, two 2nd stage bollworm (or larger) in 100 squares, blooms or bolls on two consecutive scouting trips, or one 2nd stage bollworm (or larger) in 100 squares, blooms or bolls on three consecutive scouting trips). You can use any of the insecticides noted for bollworm control in the 2019 NC Ag Chemical Manual.

# Stink Bugs in Cotton

Stink bugs don't damage cotton until it has bolls on the plant. They prefer small bolls about 10-14 days old so start scouting as soon as bolls of this age are present. Scout for stink bugs by splitting and examining the inside walls of 1-inch diameter bolls for warts and/or stained lint (any amount of even subtle injury is scored as a damaged boll). Be sure to observe the 10% damaged boll threshold level during weeks 3-5 of the bloom period.

In making spray/no-spray decisions, remember that the cost of the treatment and insecticide typically translates into the value of 10-12 pounds of lint. Insecticides targeted for stink bug generally do a good job with plant bugs. You can use any of the insecticides noted for Stinkbug control in the 2019 NC Ag Chemical Manual. Although Bidrin offers excellent control of stink bugs and plant bugs, be aware of this product's 3-day reentry interval. Remember that brown stink bug is more difficult to manage than green stink bug.



# Stink Bugs in Soybeans

Use the table below to estimate an economic injury level for stink bug in soybean.

Producer Type	Seed and Edible				Grain			
Row Width (in)	7	14	21	30-40	7	14	21	30-40
<b>Beat Cloth</b> (per row foot)				0.5				1
<b>Sweep Net</b> (15 Sweep SAMPLE)	2.5	2.5	2.5		5	5	5	
<b>Rigid Beat Cloth</b> (per row foot)	0.2	0.2	0.3		0.4	0.4	0.6	



**Jarette Hurry**  
**Bertie Agriculture Extension Agent**

**North Carolina Cooperative Extension**  
Bertie County Center  
104 Dundee St., PO Box 280  
Windsor, NC 27983

**Email –** [jjhurry@ncsu.edu](mailto:jjhurry@ncsu.edu)  
**Cell** (252) 325-3091  
**Office** (252) 794-5317  
**Fax** (252) 794-5375



 **Bertie County Cooperative Extension**

NC State University and N.C. A&T State University commit themselves to positive action to secure equal opportunity regardless of race, color, national origin, religion, political beliefs, family and marital status, sex, age, veteran status, sexual identity, genetic information or disability. NC State, N.C. A&T, U.S. Department of Agriculture, and local governments cooperating.